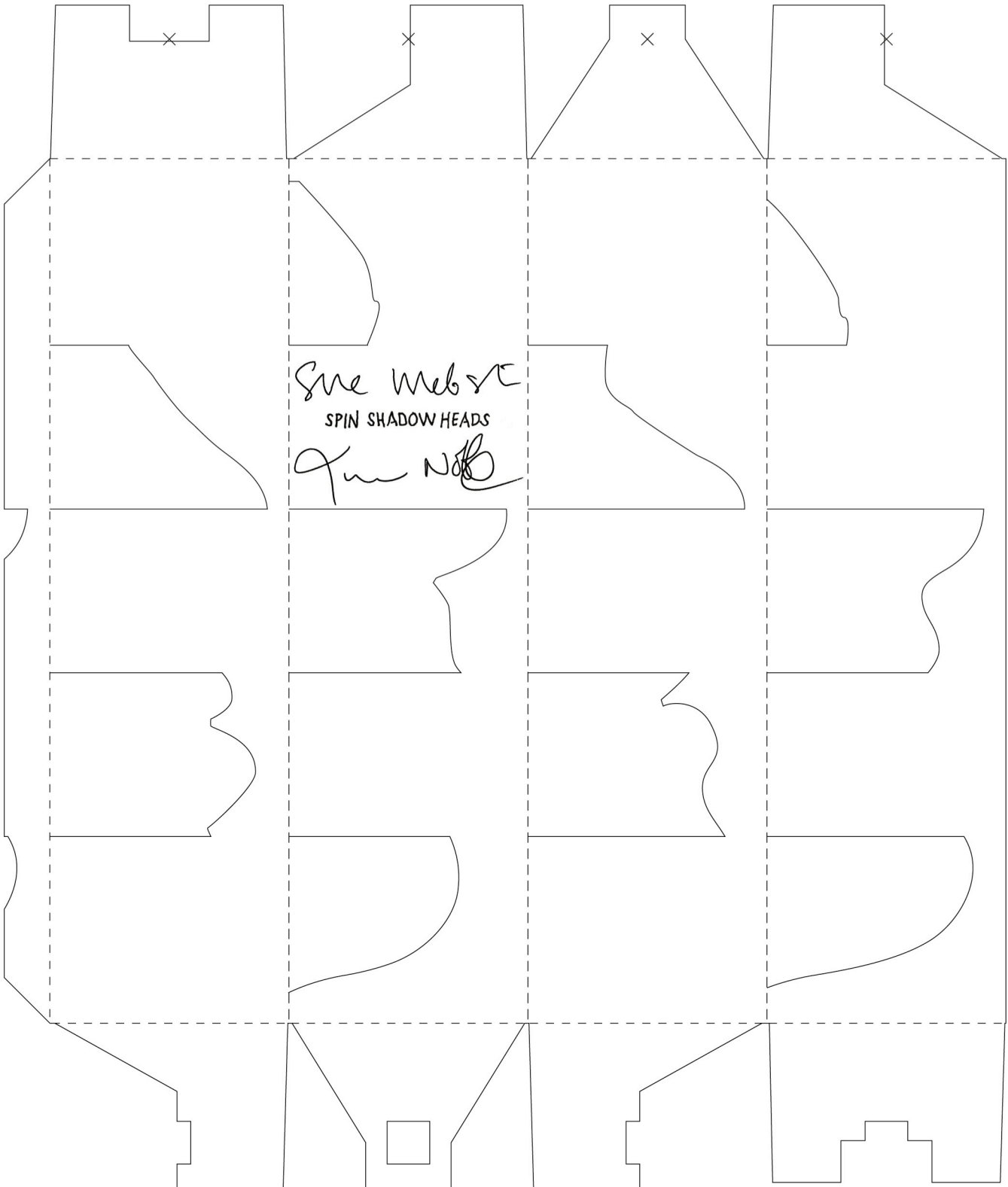


SPIN SHADOW HEADS



Sue Webster
SPIN SHADOW HEADS
Jan N. B.

A

B

C

D

BASE

TIM NOBLE & SUE WEBSTER SPIN-SHADOW HEADS

TOOLS & MATERIALS NEEDED:

SCALPEL OR CRAFT KNIFE; STICKY BACK TAPE; GLUE OR DOUBLE SIDED STICKY BACK TAPE;
STRING/COTTON.

CONSTRUCTION:

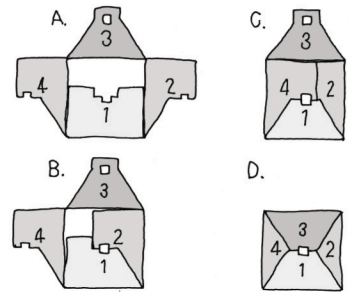
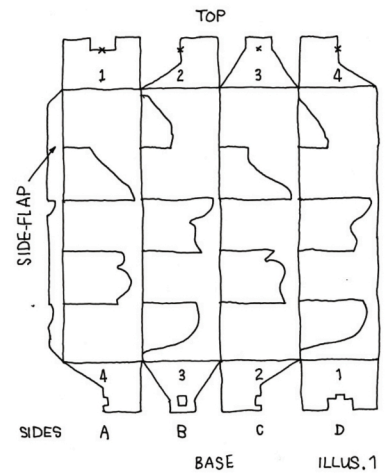
SOLID BLACK LINES = CUT

BROKEN BLACK LINES = CREASE

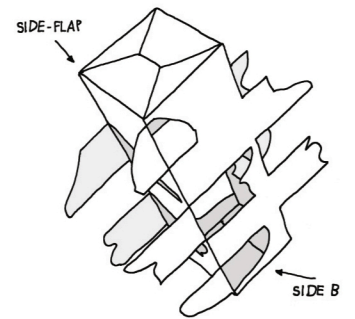
- I. USING A SHARP BLADE CUT CROSSHAIRS 'X' AT TOP AND CUT OUT HOLE AT BOTTOM OF SIDE 'B'
- II. CAREFULLY CUT ALL OTHER SOLID LINES & SCORE BROKEN LINES READY TO CREASE
- III. FOLD ALL CREASE LINES IN THE SAME DIRECTION
- IV. APPLY GLUE TO SIDE-FLAP OR ALTERNATIVELY USE DOUBLE SIDED STICKY TAPE. CAREFULLY ALIGN AND AFFIX SIDE-FLAP TO INSIDE OF SIDE 'b'
- V. FOLD FLAPS TOGETHER AT TOP FIRST IN THE FOLLOWING ORDER: 1, 2, 4 & 3 FOLDING THE TAB OF 3 UNDER FLAP 1 (SEE ILLUS. 2)
- NB. DEPENDING ON PREFERRED METHOD OF SPIN (SEE BELOW). YOU COULD COMPLETE '2: a.' NOW (ILLUS. 5)
- VI. FOLD BASE FLAPS TOGETHER AS IN STEP 'V.' YOU CAN STRENGTHEN TOP AND BOTTOM WITH STICKY BACK TAPE
- VII. PULL CUT-OUT SHAPES OUT. SIDES 'A' & 'C' FOLD TO A 90° ANGLE, SIDES 'B' & 'D' FOLD TO A 180° ANGLE (ILLUS. 3)

METHODS OF SPIN:

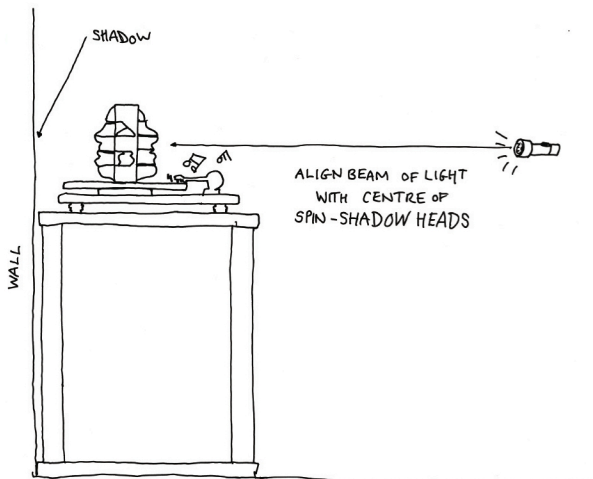
- 1: RECORD DECK SPIN (ILLUS. 4)
 - a. PLACE RECORD DECK AS CLOSE TO A WALL AS POSSIBLE
 - b. PLACE SPIN-SHADOW HEADS ON TURN TABLE, POSITION SQUARE HOLE ON BASE OVER SPINDLE
 - c. SELECT 33 RPM AND START TURNTABLE
 - d. HOLDING A POWERFUL LIGHT SOURCE, SUCH AS A TORCH, DIRECT THE BEAM LEVEL WITH SPIN-SHADOW HEADS AND WALK AWAY FROM TURNTABLE UNTIL SHADOW COMES INTO FOCUS.
- 2: CEILING SPIN (ILLUS. 5)
 - a. THREAD STRING/COTTON THROUGH THE CROSSHAIR HOLE AT THE TOP OF SPIN SHADOW HEADS AND TIE TO A USED MATCH (SEE ILLUS. 5)
 - b. ADJUST LENGTH OF STRING/COTTON SO THAT CENTRE OF SPIN SHADOW HEADS ALIGNS WITH CENTRE OF CEILING LIGHTBULB.
 - c. HANG SPIN SHADOW HEADS CLOSE TO A WALL, ADJUSTING DISTANCE FROM WALL UNTIL SHADOW IS SHARP
 - d. SPIN SPIN-SHADOW HEADS BY HAND. ENJOY!
- NB TRY AFFIXING A COIN WITH GLUE OR DOUBLE SIDED STICKY TAPE TO THE INSIDE OF SPIN SHADOW HEADS, MAKING SURE IT IS CENTRED, TO IMPROVE BALANCE AND SPIN.



ILLUS. 2

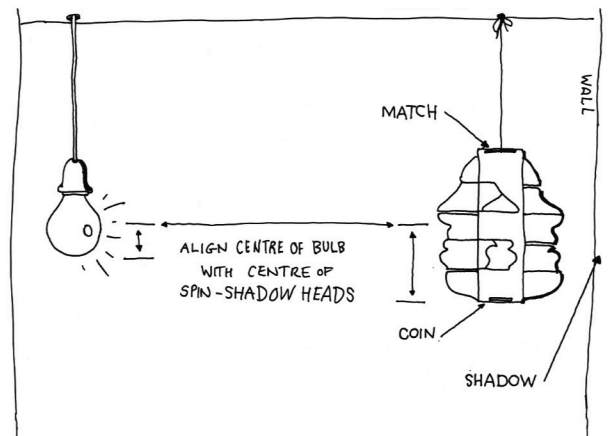


ILLUS. 3



RECORD DECK SPIN

ILLUS. 4



CEILING SPIN

ILLUS. 5